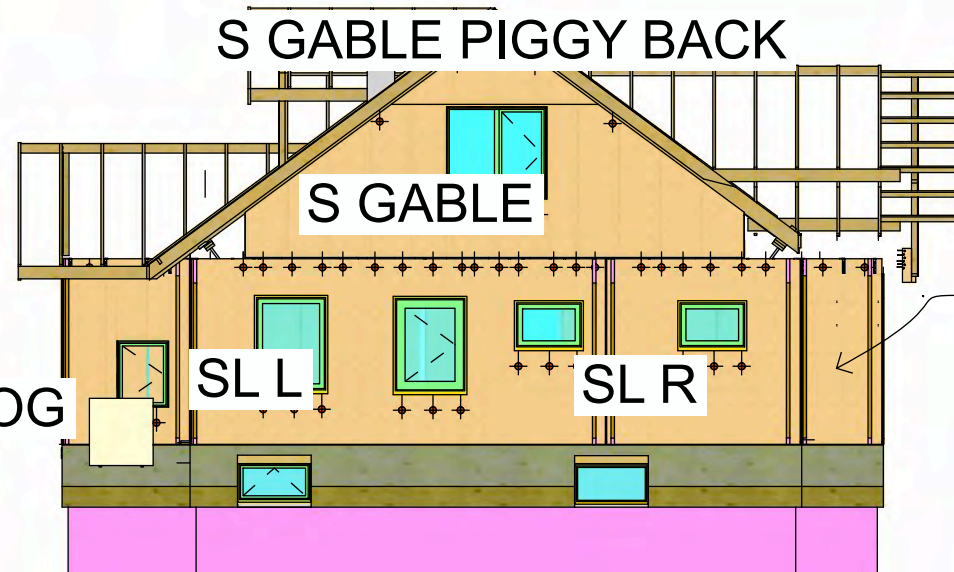
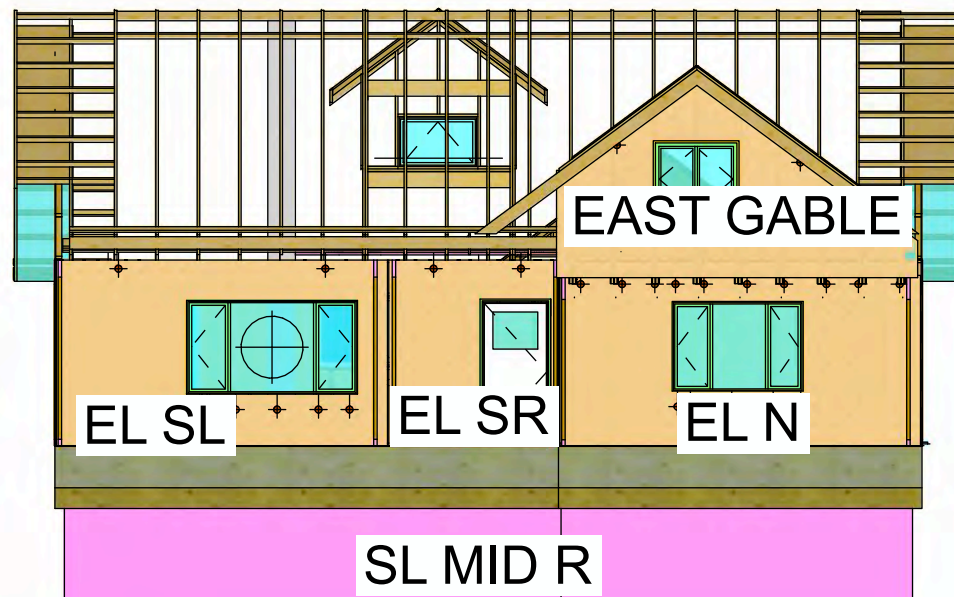
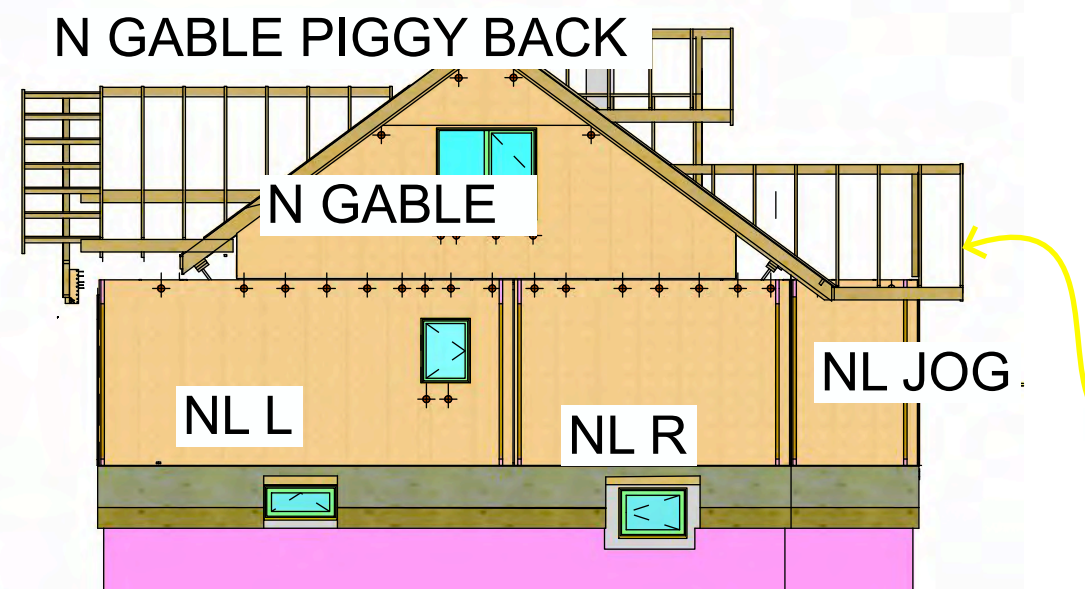


BUTTERWICK CONSTRUCTION
& CARPENTRY LTD.
5628 82 Ave
Edmonton, AB T6B 3E6
Tel: 780.434.3559
www.butterwick.ca

PAGE	ORDER	PANEL	LENGTH(FT)	HEIGHT (IN)
1		PANEL KEY		
2		EL SL	16.00	107.625
2		EL SR	8.33	107.625
3		EL N	17.25	98.75
4		WL S	23.25	107.625
5		WL N	7.10	107.625
5		WL MID	11.33	107.625
6		SL MID L	19.70	107.625
6		SL MID R	9.33	107.625
6		SL JOG	8.00	107.625
7		NL EL	20.00	107.625
7		NL ER	12.25	107.625
7		NL JOG	8.00	107.625
8		S GABLE	29.70	88.75
8		S GABLE PB		
9		N GABLE	29.70	88.75
9		N GABLE PB		
10		E GABLE	17.50	116



STICK FRAME
THIS JOG



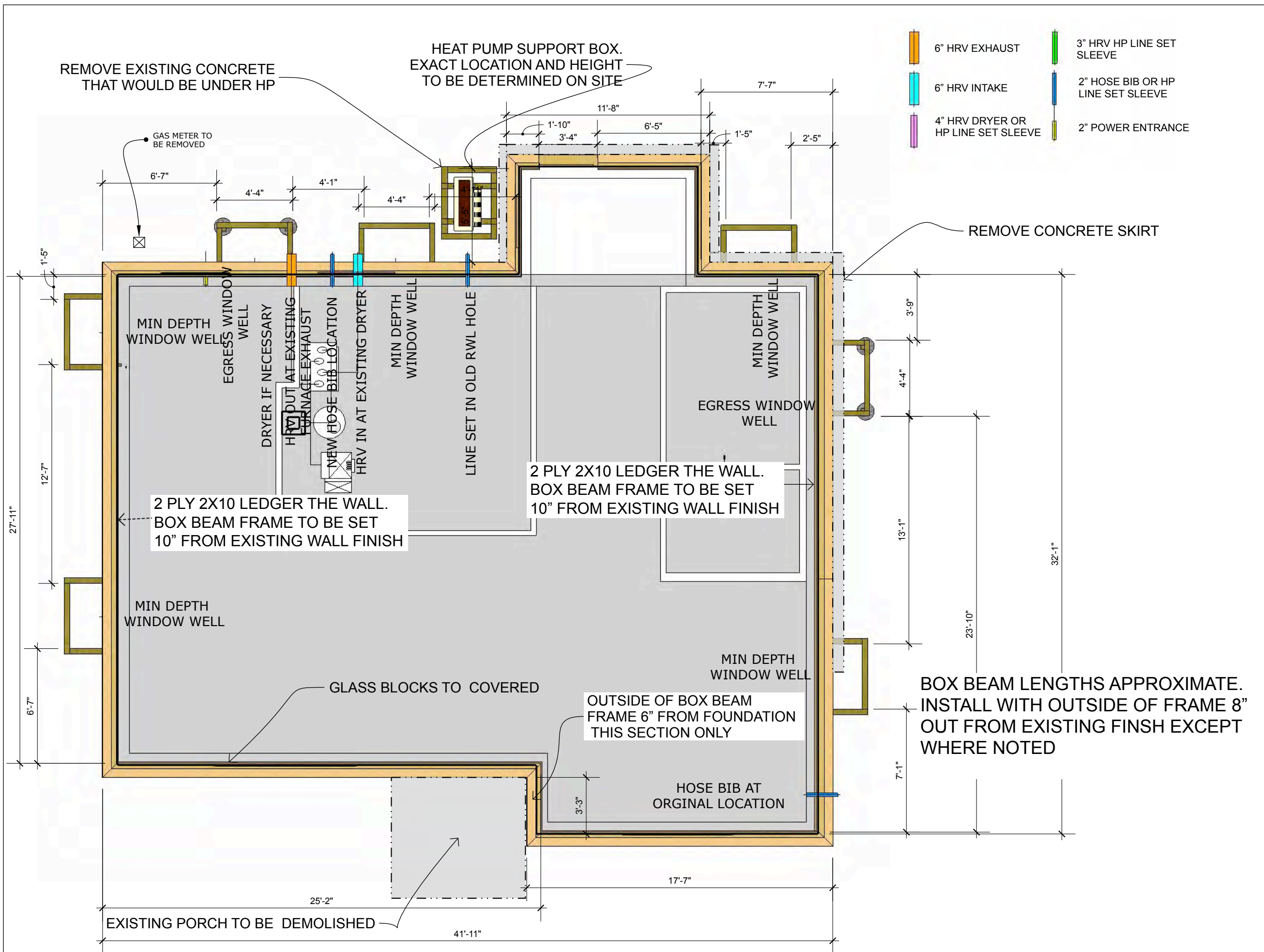
PANEL KEY SITE
DRAWINGS

DATE
May 24, 2022

FOR REVIEW

DRAWN BY
PA, TA

PANEL KEY



HIGHLANDS SITE
DRAWINGS

DATE
May 24, 2022

FOR REVIEW

DRAWN BY
PA, TA

SITE PREP TOP
VIEW

2X8 SPF TOP PLATE

WRB

TAKE CARE NOT TO RIP WRB WHEN
INSTALLING AND ADJUSTING THE BOX BEAM

3 1/4" FRAMING NAILS IN REMAING HOLES

2- 5" X 1/4" SDS SCREWS PER STRAP

2 PLY 2X8
2- 6" X 1/4" SDS PER STRAP
NO NAILS REQ'D

3 1/2" WIDE SQUISH STRIP AND
MONSTER BEAD OF ACOUSTICAL
SEALANT TO SEAL WRB TO PARGING

ALTERNATE LEDGER INSTALLATION

ALTERNATE LEDGER INSTALLATION
NORTH AND SOUTH

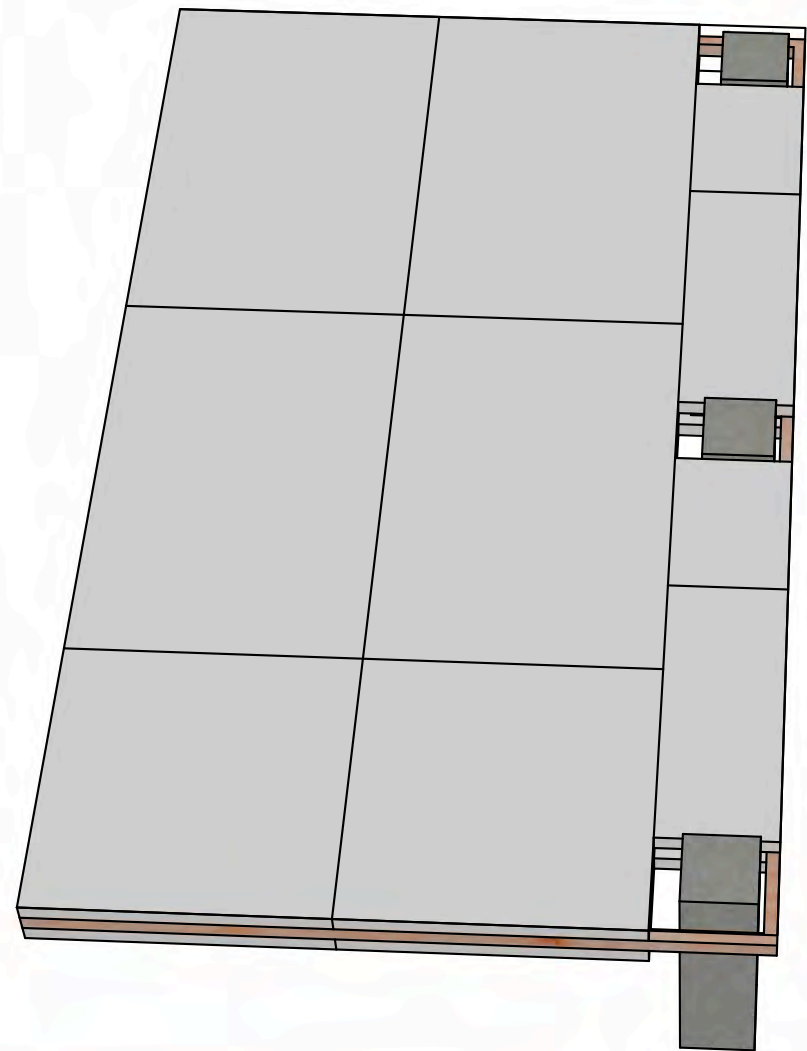
HIGHLANDS SITE
DRAWINGS

DATE
May 24, 2022

FOR REVIEW

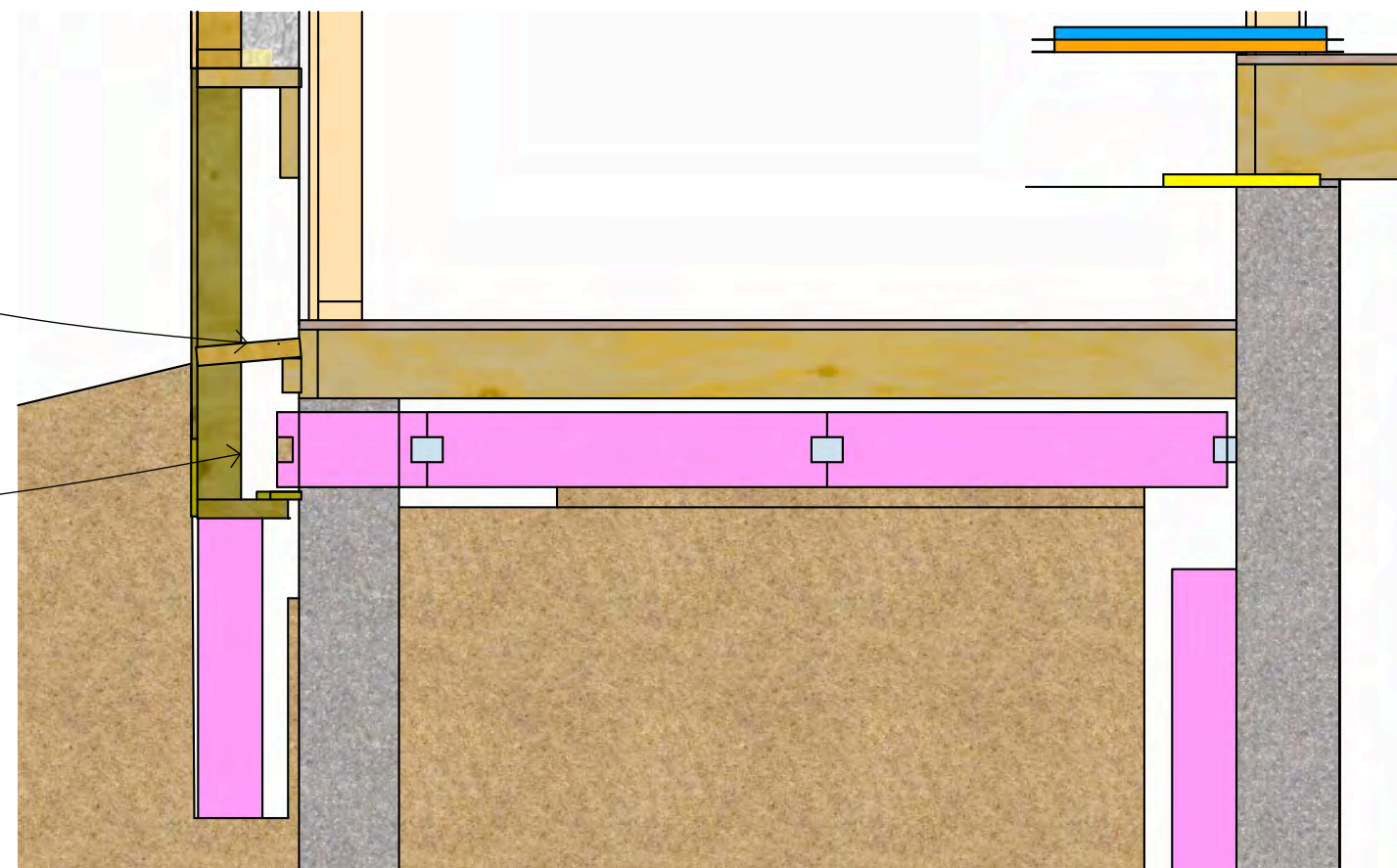
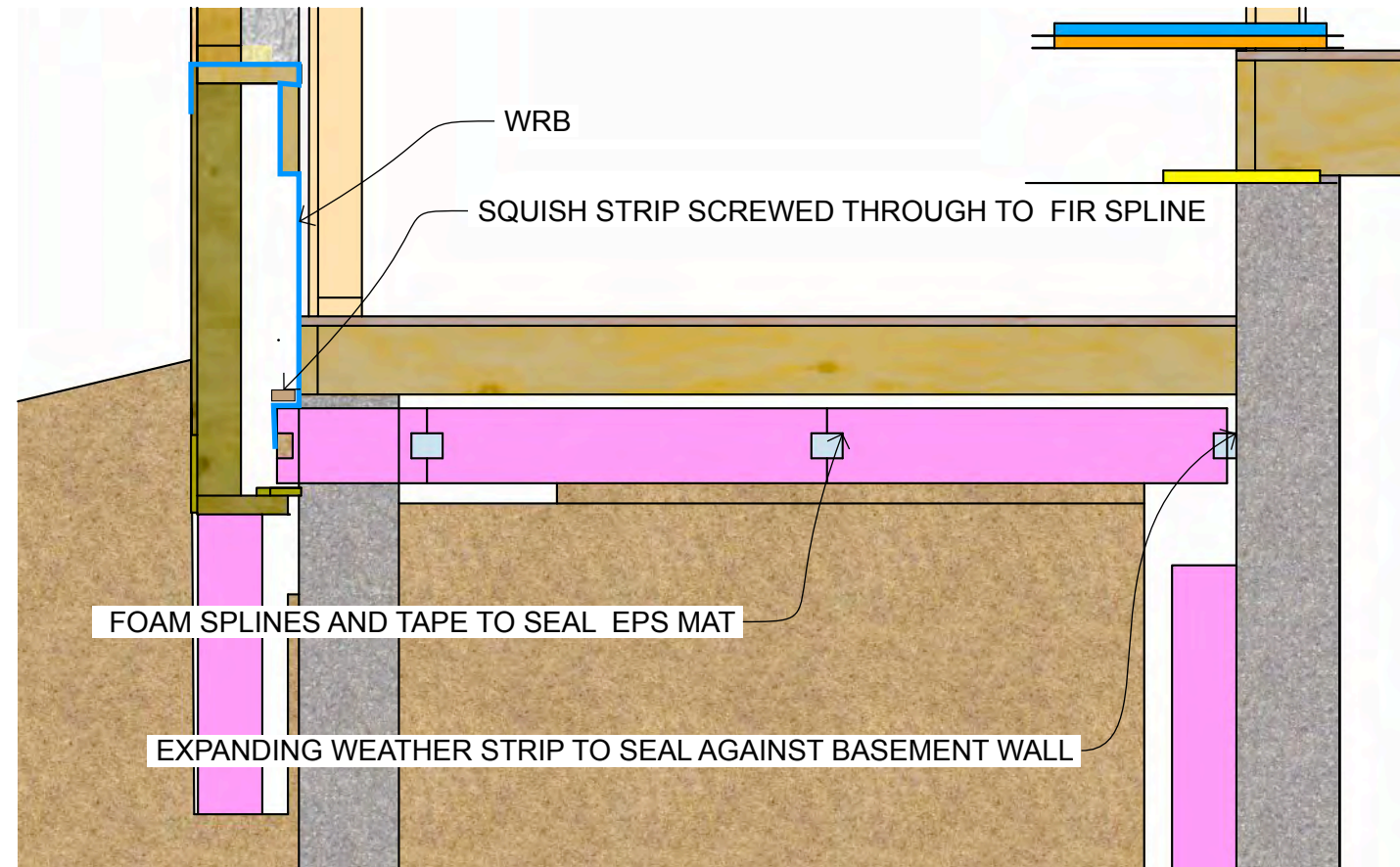
DRAWN BY
PA, TA

ALTERNATE
LEDGER
ATTACHMENT



SLOPED SILL AT DOORWAY SEALED WITH PEAL AND STICK.
PROVIDE ROOM FOR DECKING AND PWF SPACERS

BLOCK BOTTOM OF BOX BEAM TO CONCRETE PIERS



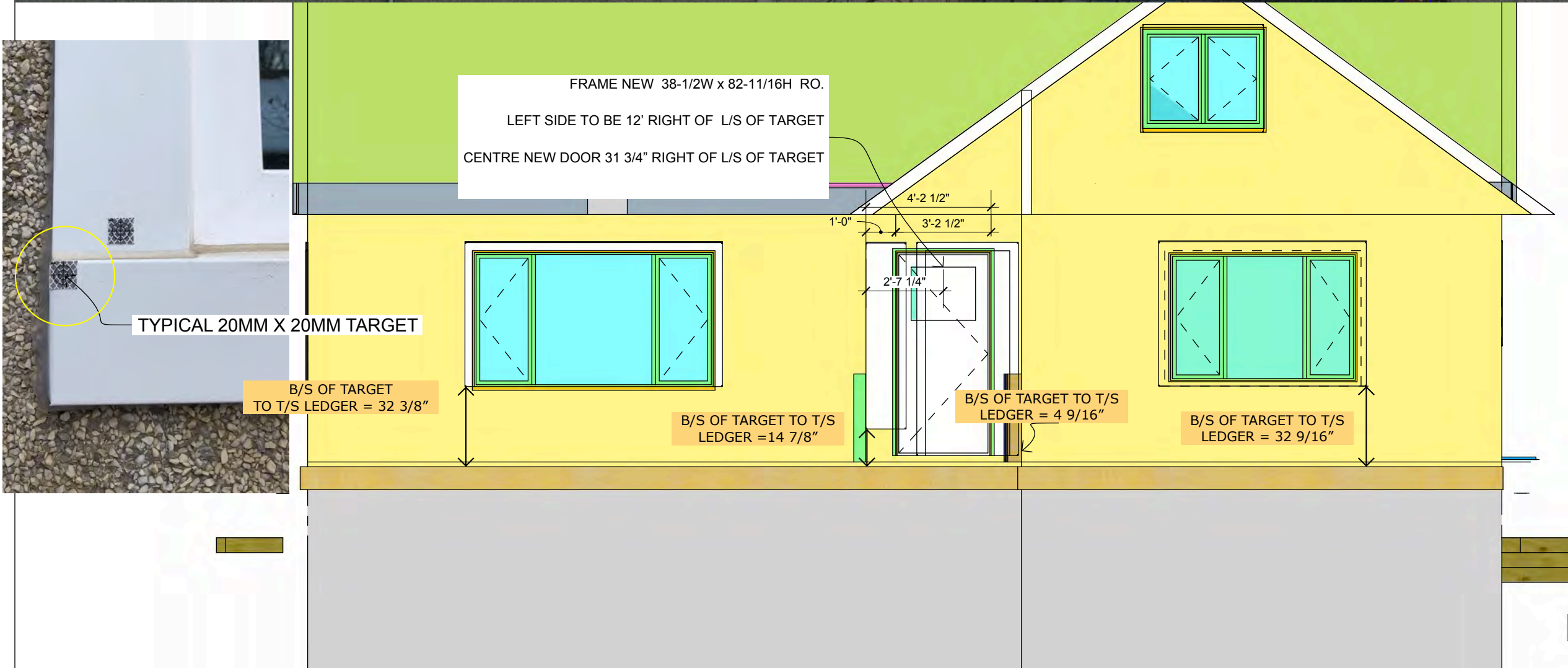
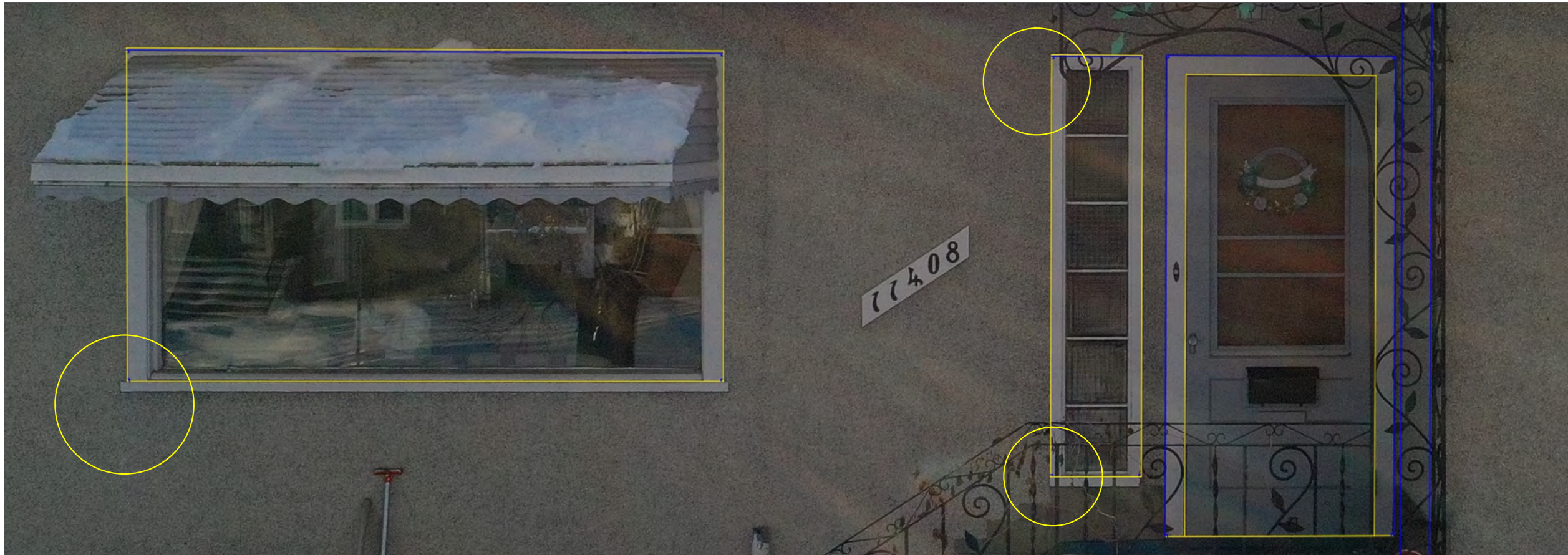
HIGHLANDS SITE
DRAWINGS

DATE
May 24, 2022

FOR REVIEW

DRAWN BY
PA, TA

AIR SEALING AND
INSULATION UNDER
BACK PORCH



HIGHLANDS SITE
DRAWINGS

DATE
May 24, 2022

FOR REVIEW

DRAWN BY
PA, TA

EAST LEDGER
ELEVATION

HIGHLANDS SITE
DRAWINGS

DATE
May 24, 2022

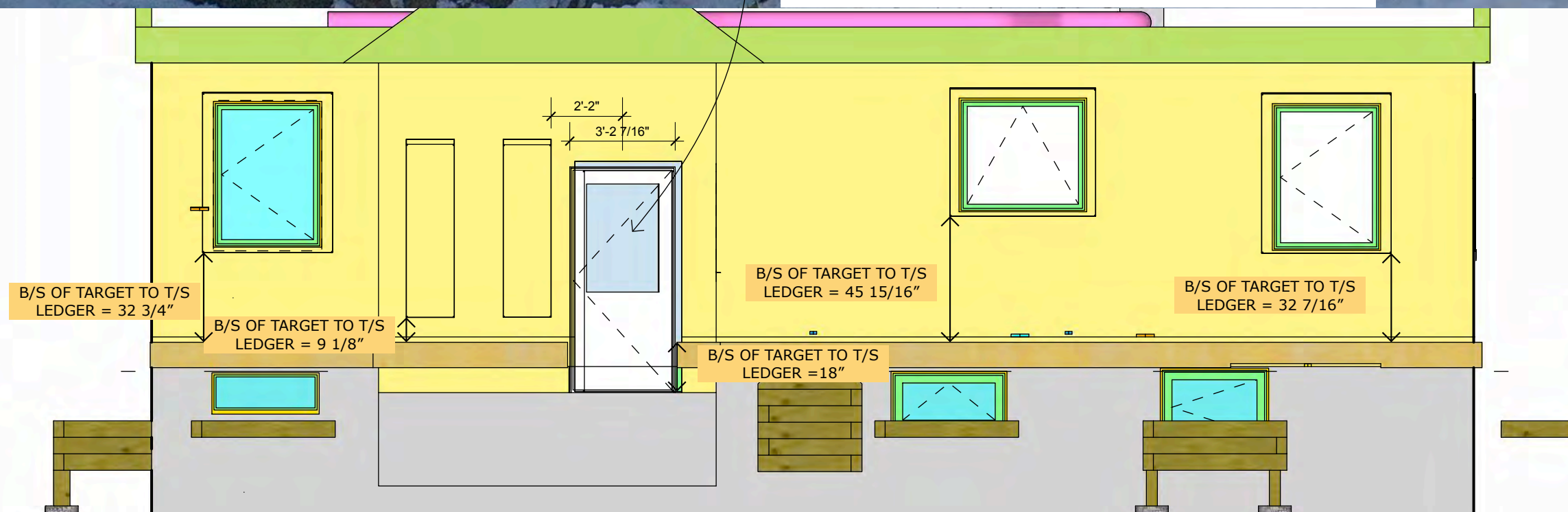
FOR REVIEW

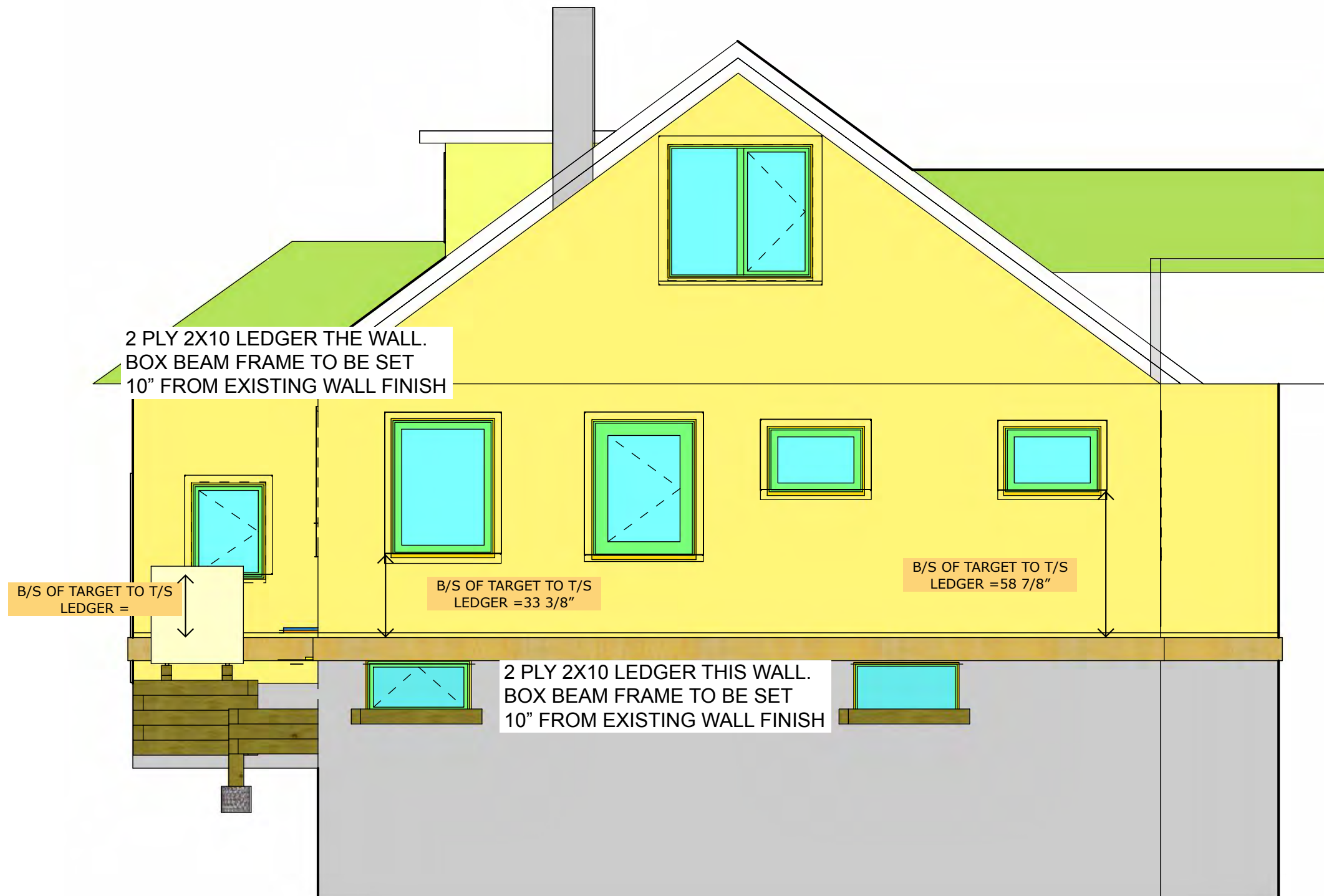
DRAWN BY
PA, TA

WEST LEDGER
ELEVATION



EXPAND RO TO 38-1/2W x 82-11/16H BY MOVING STUD/TRIMMER LEFT.
CENTRE NEW DOOR 2'2" TO THE RIGHT OF RIGHT SIDE OF TARGET





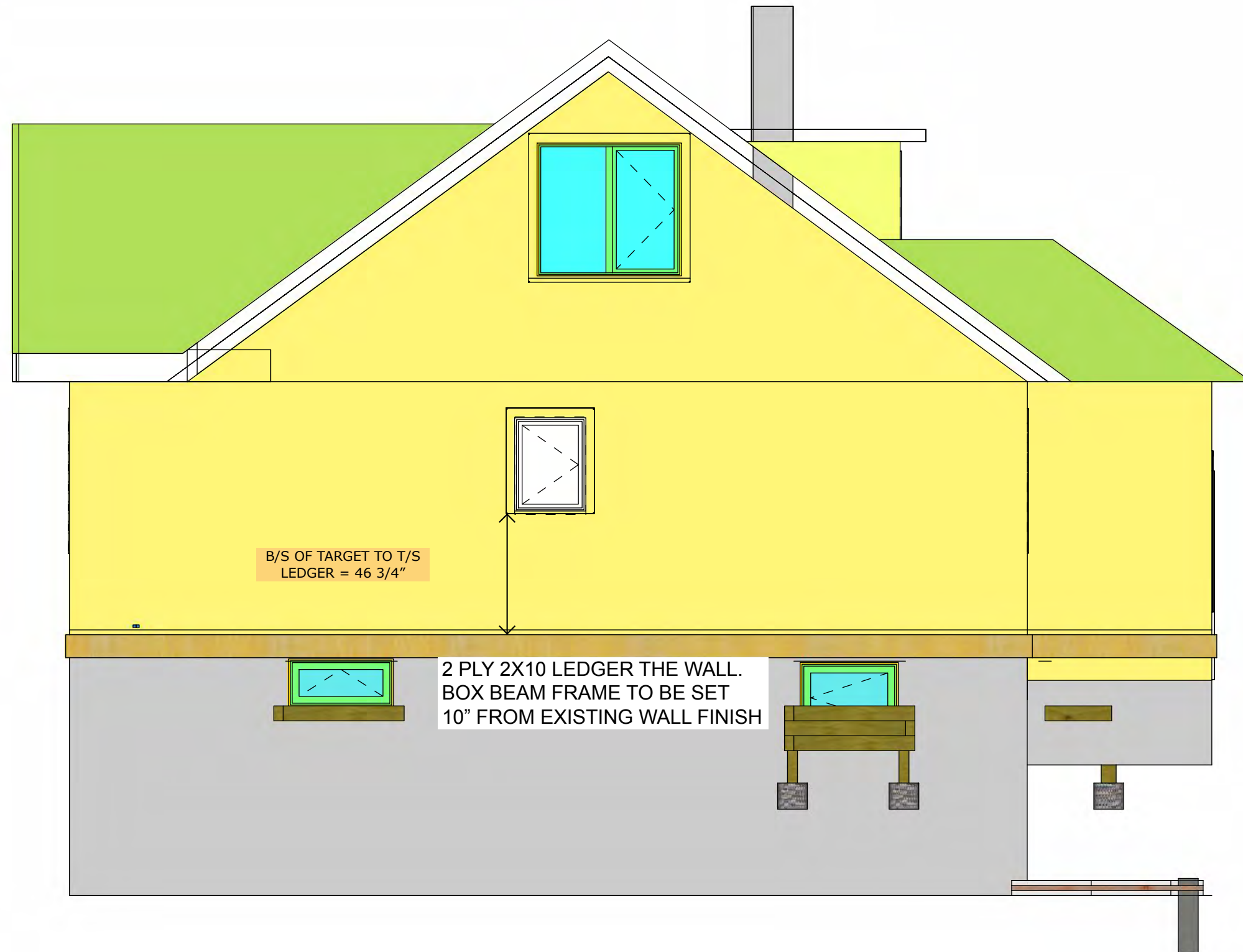
HIGHLANDS SITE
DRAWINGS

DATE
May 24, 2022

FOR REVIEW

DRAWN BY
PA, TA

SOUTH LEDGER
ELEVATION



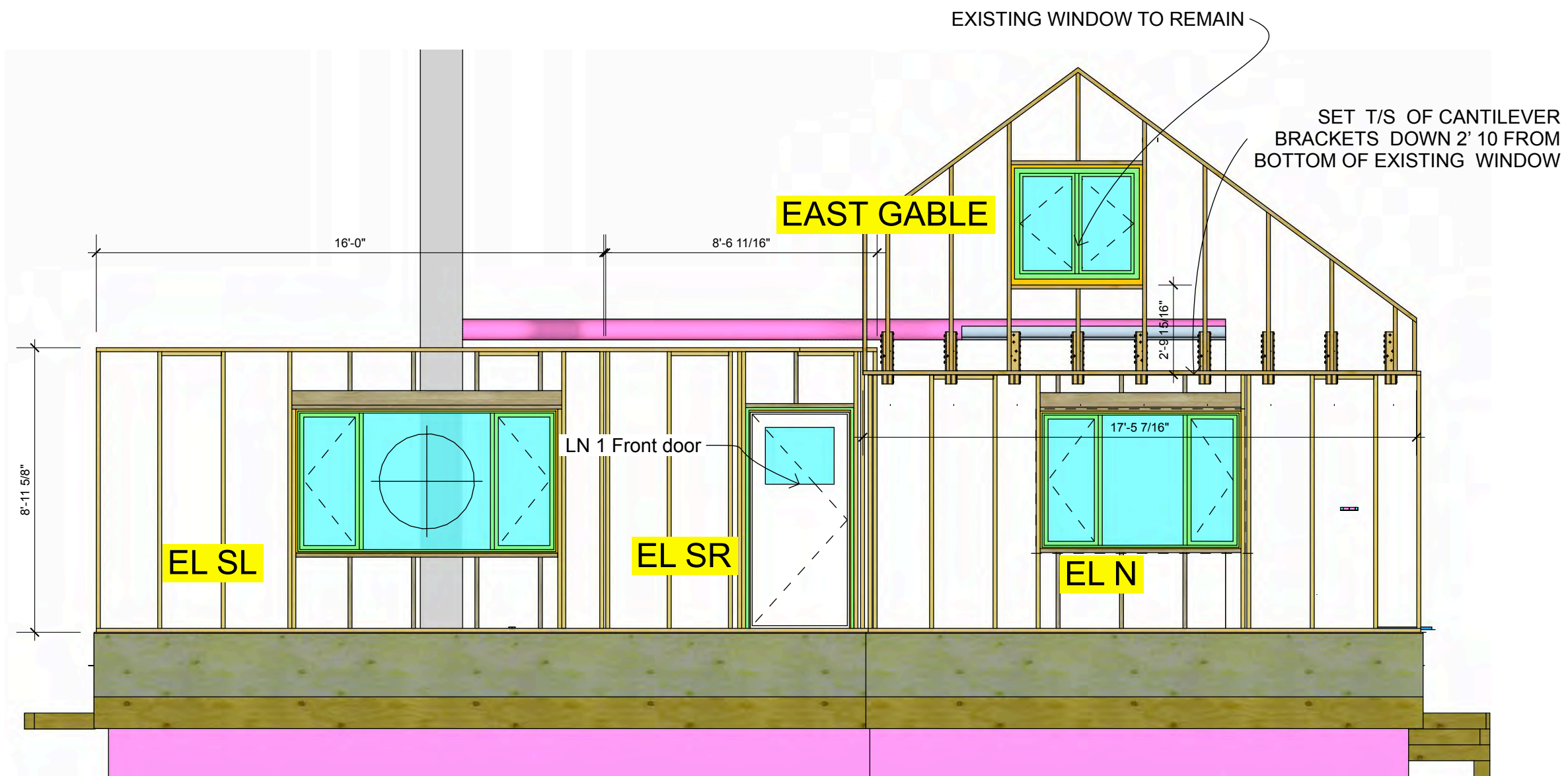
HIGHLANDS SITE
DRAWINGS

DATE
May 24, 2022

FOR REVIEW

DRAWN BY
PA, TA

NORTH LEDGER
ELEVATION



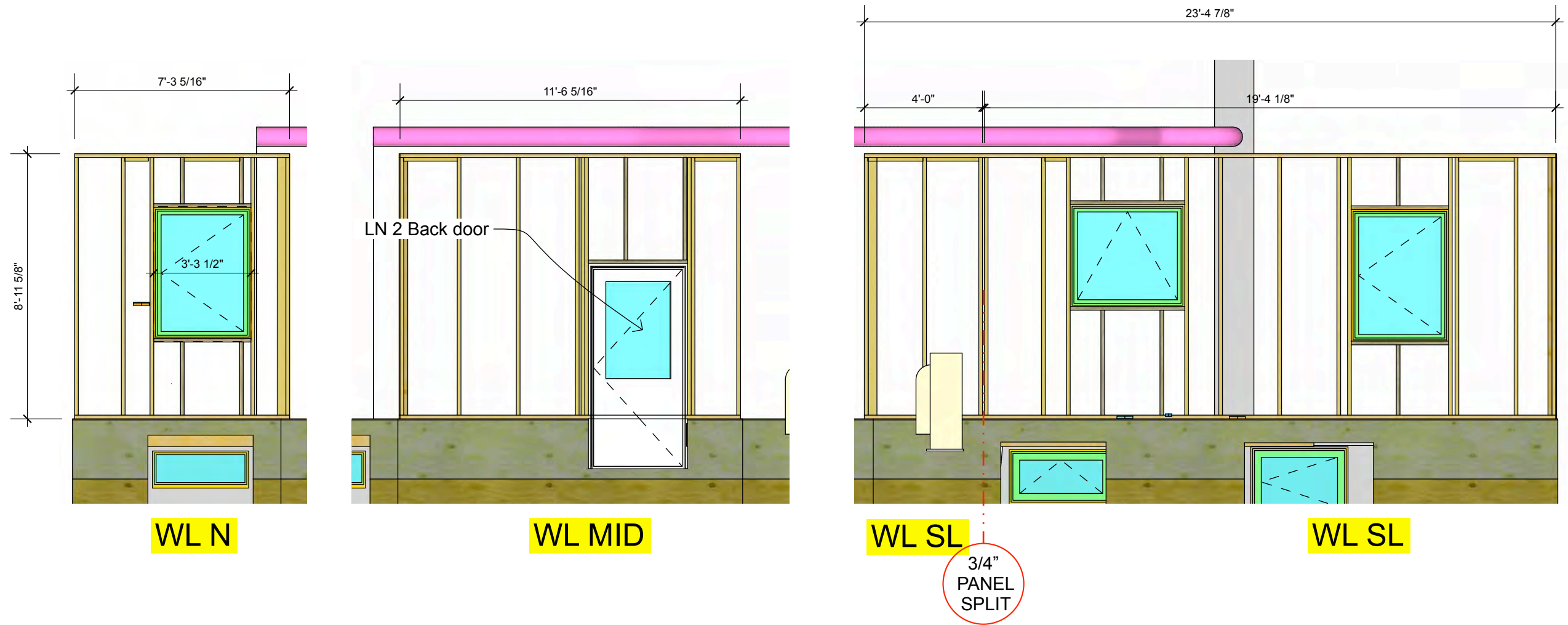
HIGHLANDS SITE
DRAWINGS

DATE
May 24, 2022

FOR REVIEW

DRAWN BY
PA, TA

EAST WALL



WL N

WL MID

WL SL

WL SL

3/4"
PANEL
SPLIT

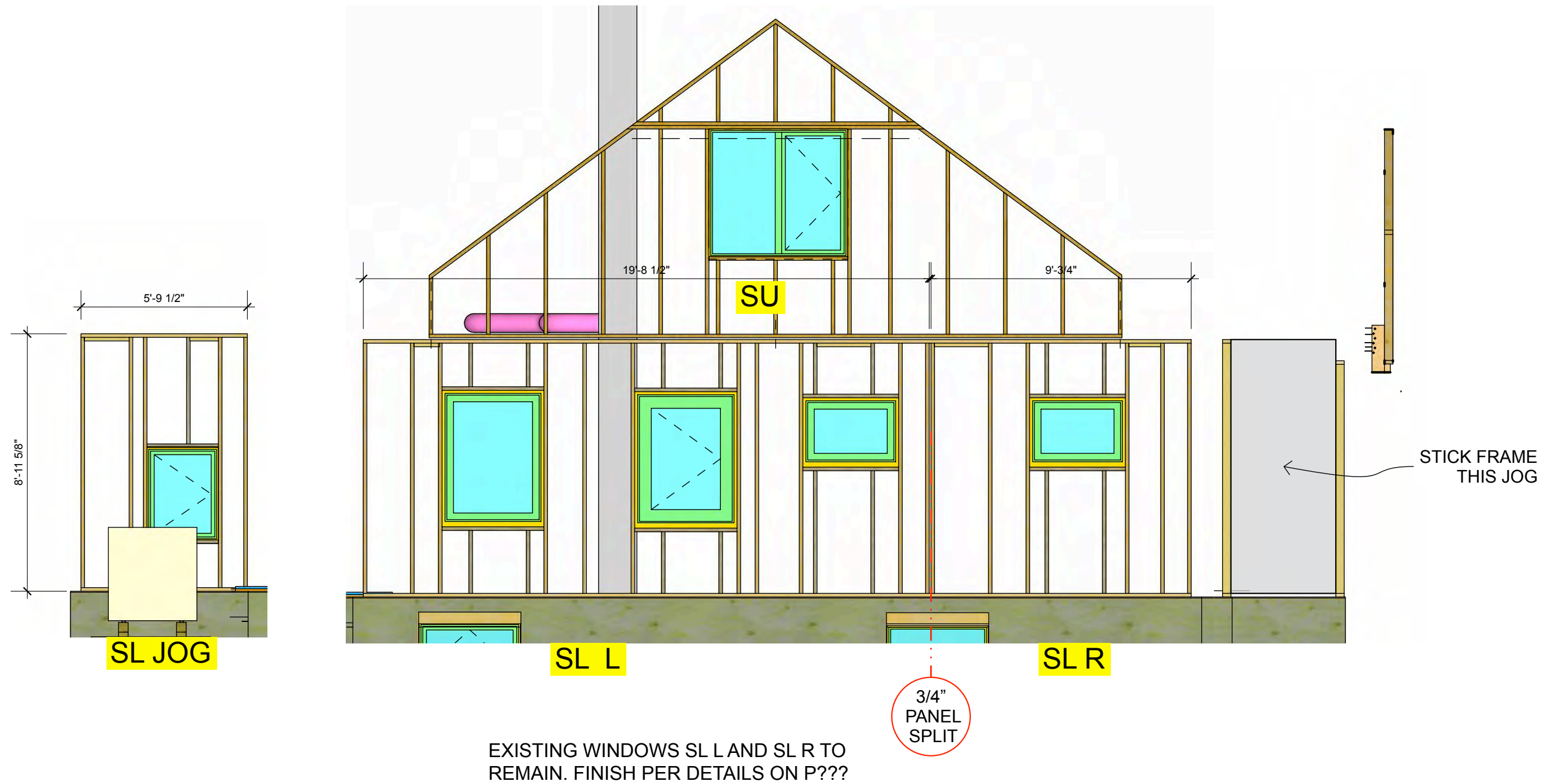
HIGHLANDS SITE
DRAWINGS

DATE
May 24, 2022

FOR REVIEW

DRAWN BY
PA, TA

WEST WALL



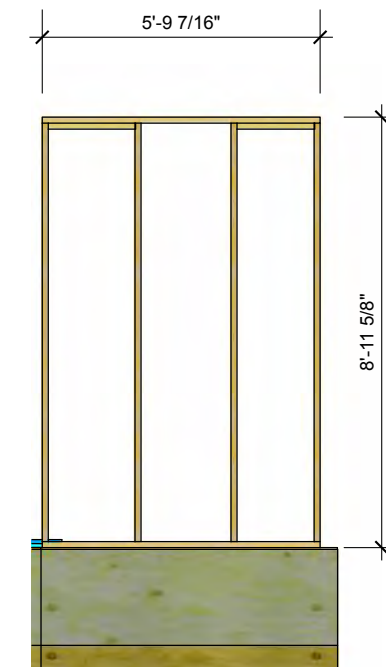
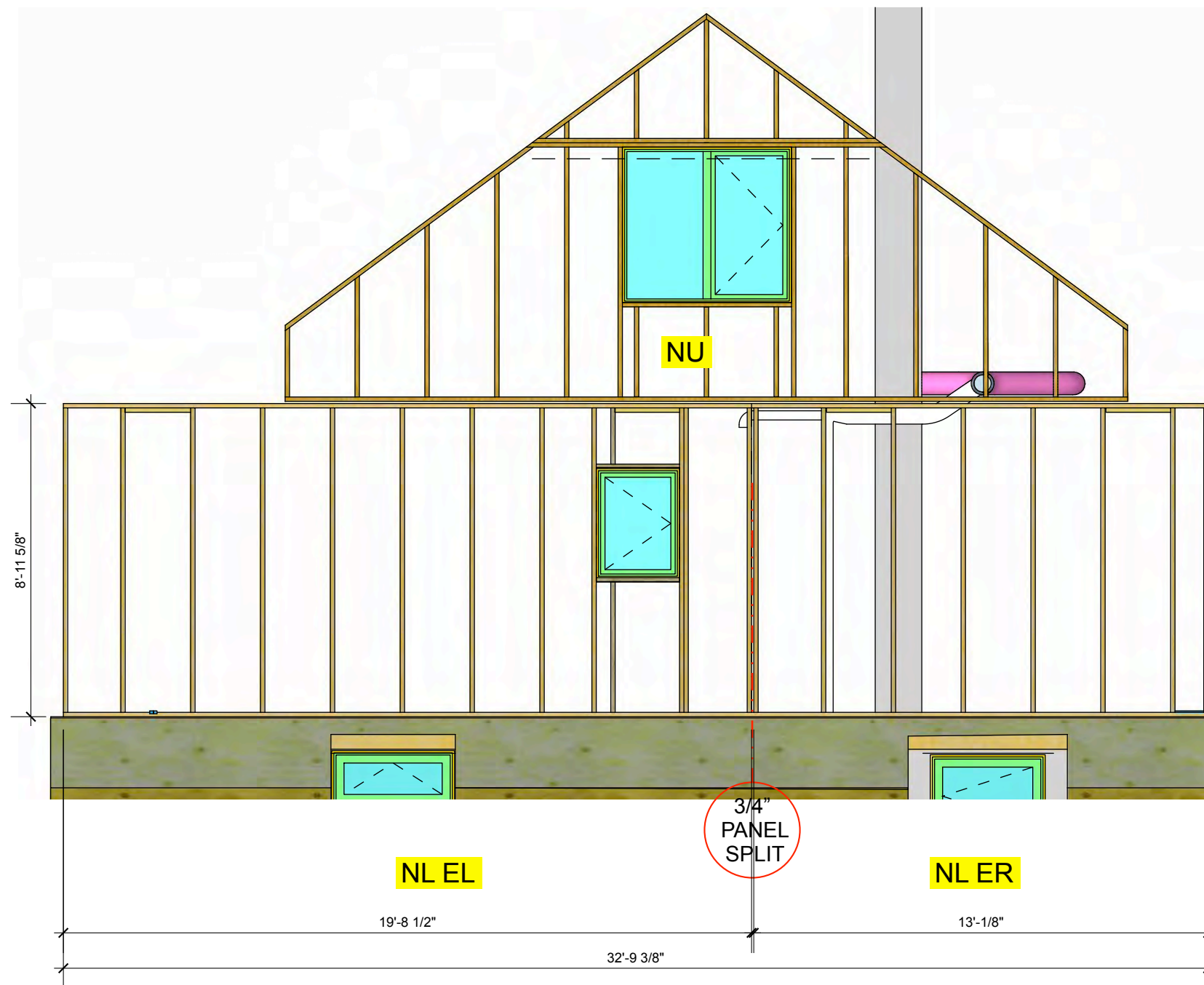
HIGHLANDS SITE
DRAWINGS

DATE
May 24, 2022

FOR REVIEW

DRAWN BY
PA, TA

SOUTH WALL



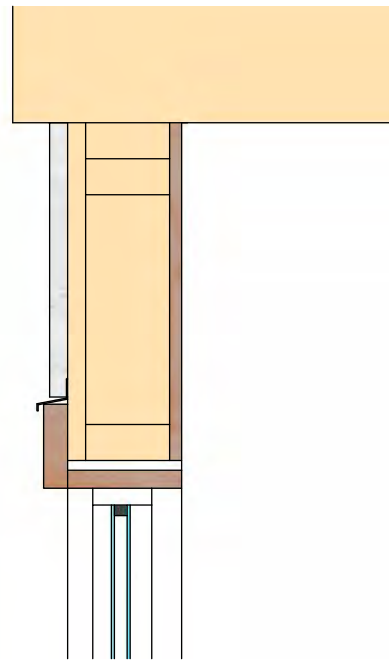
HIGHLANDS SITE
DRAWINGS

DATE
May 24, 2022

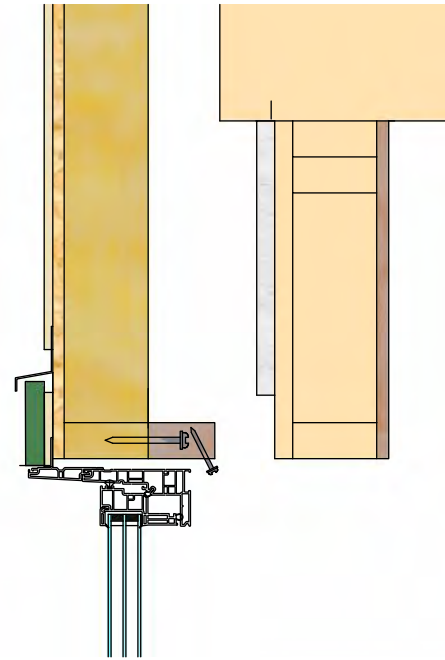
FOR REVIEW

DRAWN BY
PA, TA

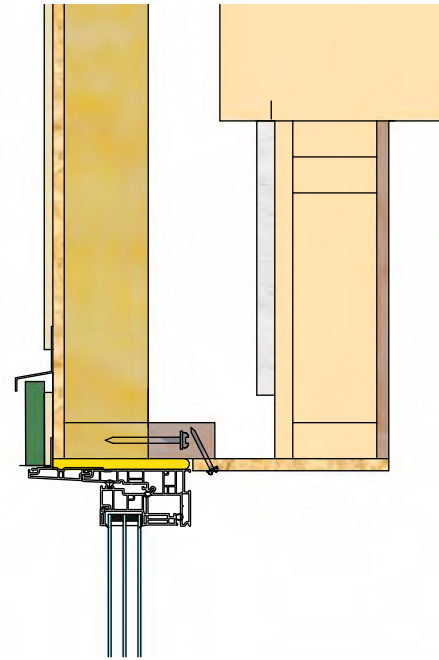
NORTH WALL



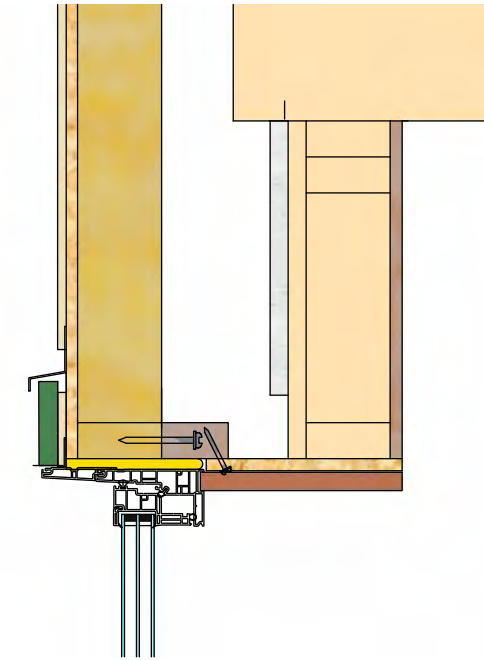
STEP 1
REMOVE ORIGINAL WINDOW
RIGHT BACK TO 2X4 RO



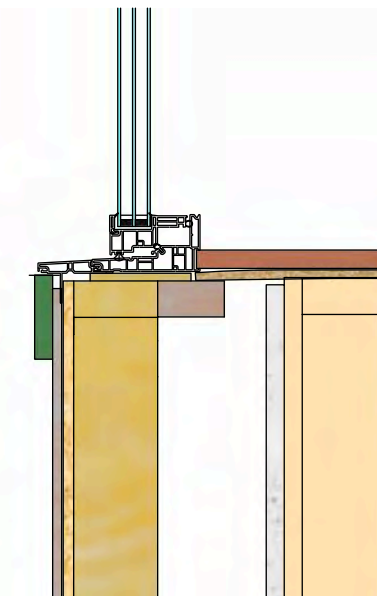
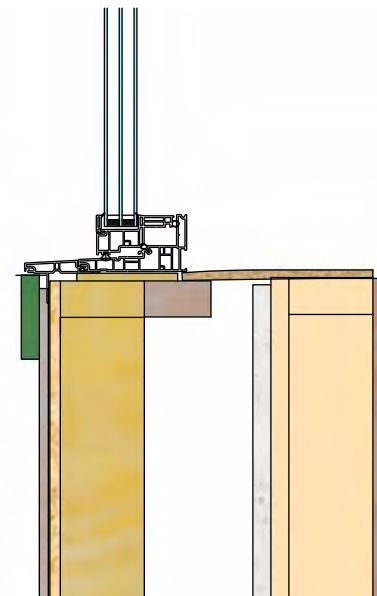
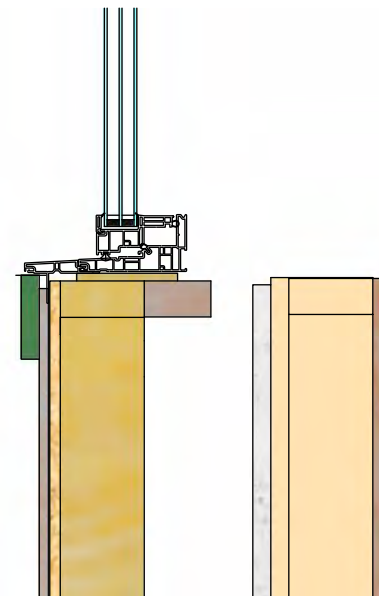
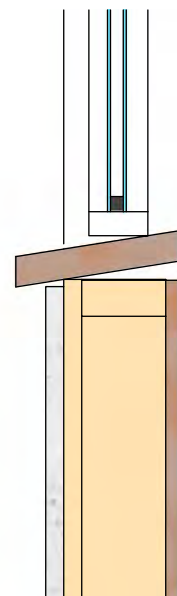
STEP 2
INSTALL PANEL CENTRED ON RO
AS CLOSE AS POSSIBLE



STEP 3
-INSTALL OSB OR THIN PLYWOOD JAMB LINER.
-USE JAMB LINER TO TIE NEW WALL PANEL
TO ORIGINAL RO.
-MAINTAIN CLEARANCE TO INSTALL FINISH JAM
LINER IN KOLHTECH SLOT



STEP 4
-INSTALL FINISH JAMB LINER
-SHIM IN PLACE
-INSTALL CASING



NOTE: SIDES ARE SAME AS TOP

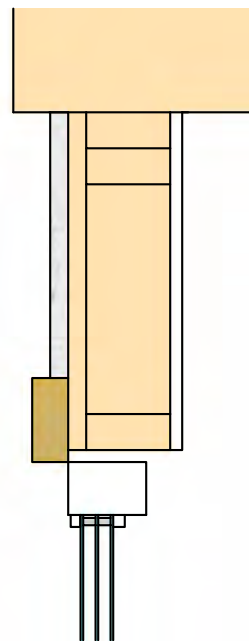
HIGHLANDS SITE
DRAWINGS

DATE
May 24, 2022

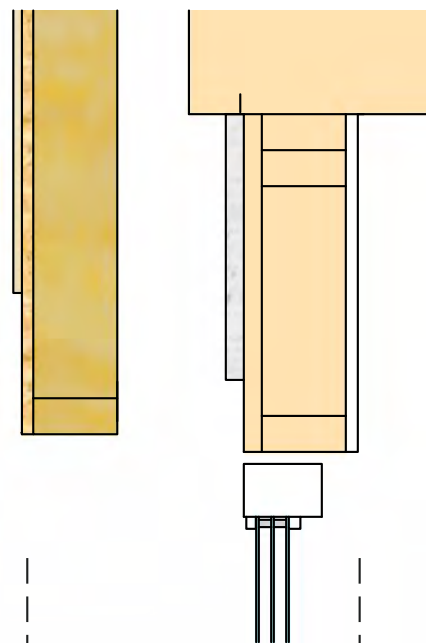
FOR REVIEW

DRAWN BY
PA, TA

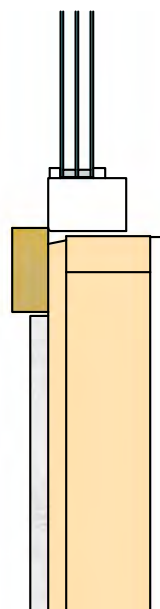
KOHLTECH WINDOW
DETAILS



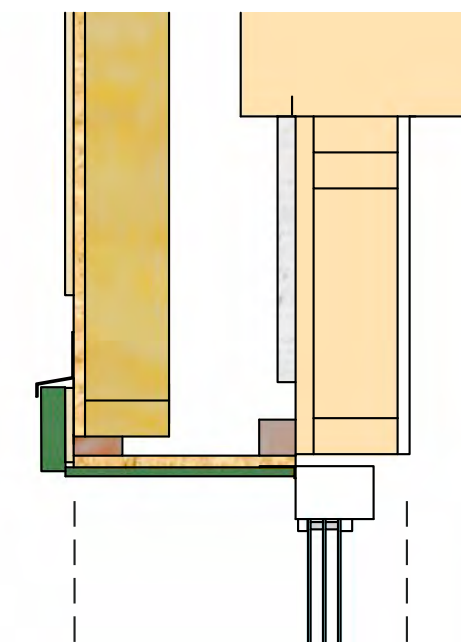
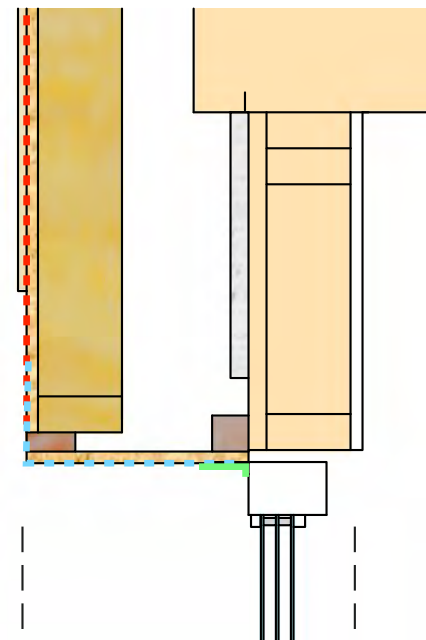
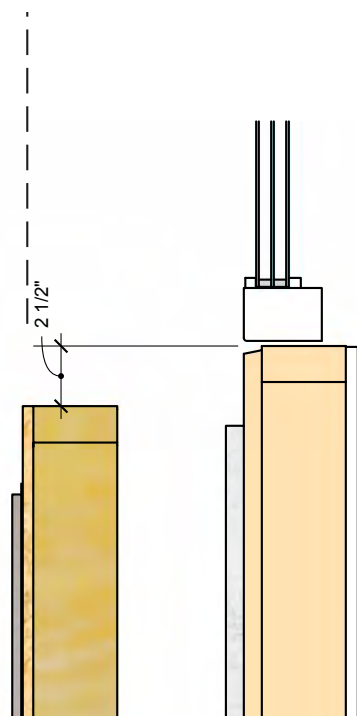
STEP 1
- REMOVE EXISTING TRIM
- CUT BACK SHEATHING UNDER EXISTING WINDOW BY ~1/2" HIGH AND 3/4" DEEP



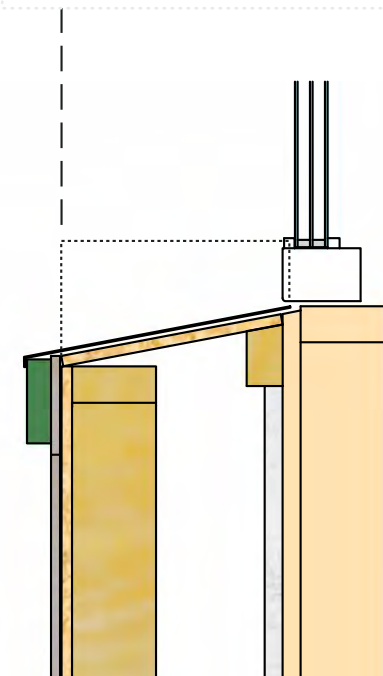
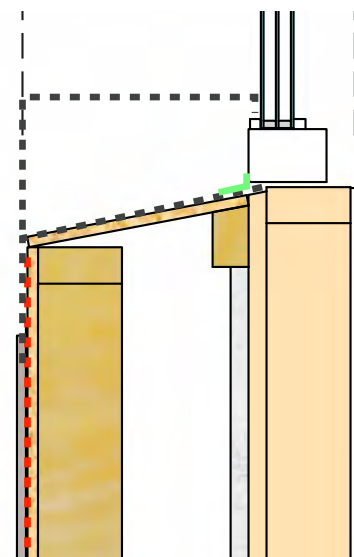
STEP 2
- INSTALL PANEL CENTRED ON EXISTING WINDOW. BOTTOM OF PANEL RO SHOULD BE 2 TO 2 1/2" BELOW B/S OF EXISTING WINDOW



STEP 3
- SHIM PANEL RO SO THAT BACK SIDE OF OSB JAMB LINER IS FLUSH WITH EXISTING WINDOW ON SIDES AND TOP
- INSTALL ~2X2 TOP AND SIDE CLEATS SO THAT INSIDES ARE FLUSH WITH OUTSIDE OF EXISTING WINDOW
- INSTALL CLEAT FOR SLOPED SILL
- INSTALL PEAL AND STICK SILL LINER. TUCK INTO STEP 1 SLOT UNDER EXISTING WINDOW. FOLD UP SIDES MIN 4" AND SEAL TO PANEL WRB
- COVER JAMB LINE WITH WRB. TOP LAP UNDER PANEL WRB. SEAL WITH ACOUSTICAL OR SIGA TAPE FOR AIR AND WATER TIGHTNESS



STEP 4
- INSTALL METAL SILL FLASHING WITH ENDS FOLDED UP SIDES MIN 2"
- INSTALL 3/8" HARDIE PANEL JAMB AND CAULK TO WINDOW WITH URETHANE CAULKING
- INSTALL RAIN SCREEN BATTENS
- INSTALL EXTERIOR WINDOW TRIM AND CAULK TO JAMB
- INSTALL HEAD FLASHING AND TAPE TO WRB FOR WATER TIGHTNESS



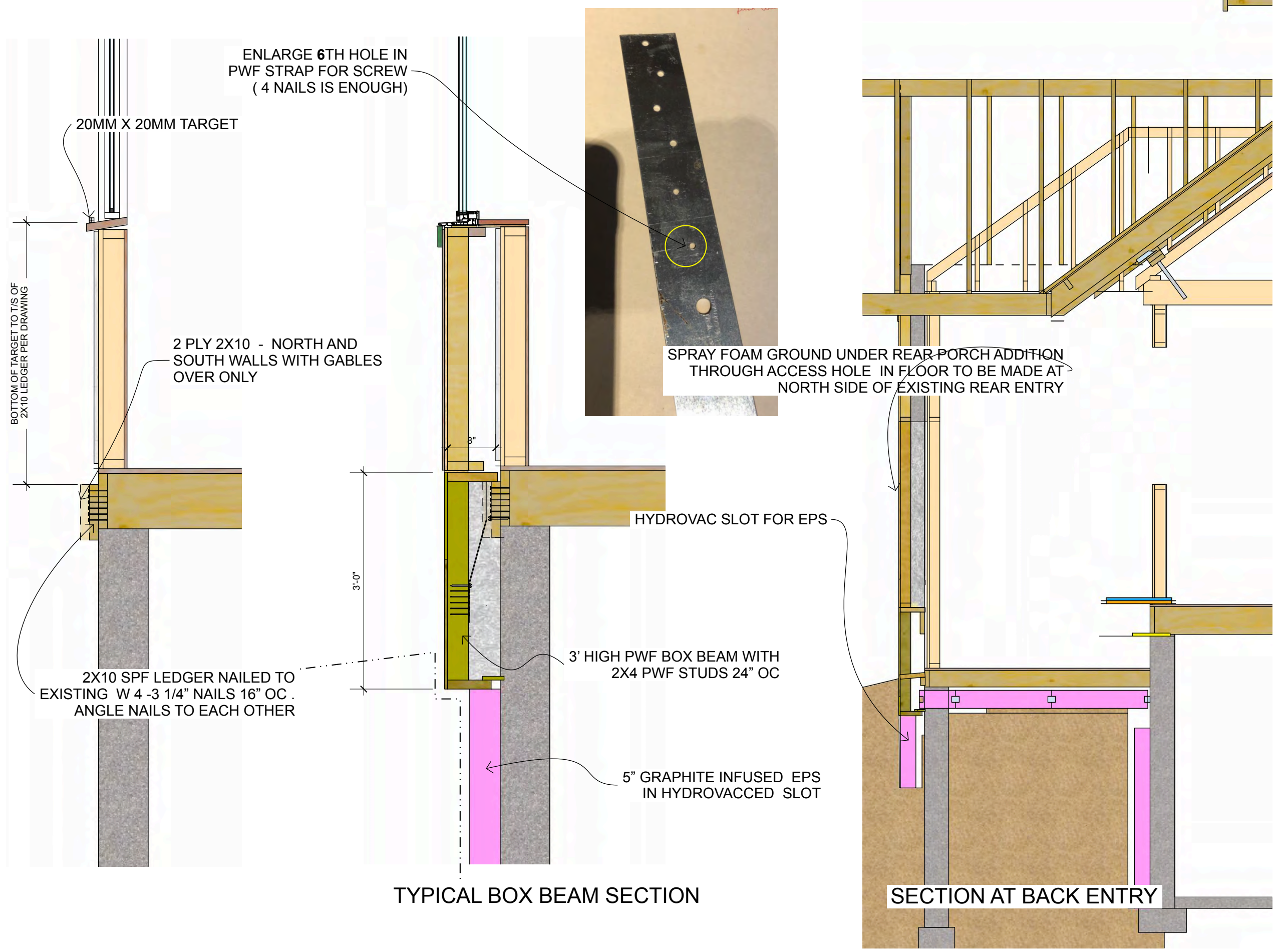
HIGHLANDS SITE DRAWINGS

DATE
May 24, 2022

FOR REVIEW

DRAWN BY
PA, TA

EXISTING WINDOW TREATMENT



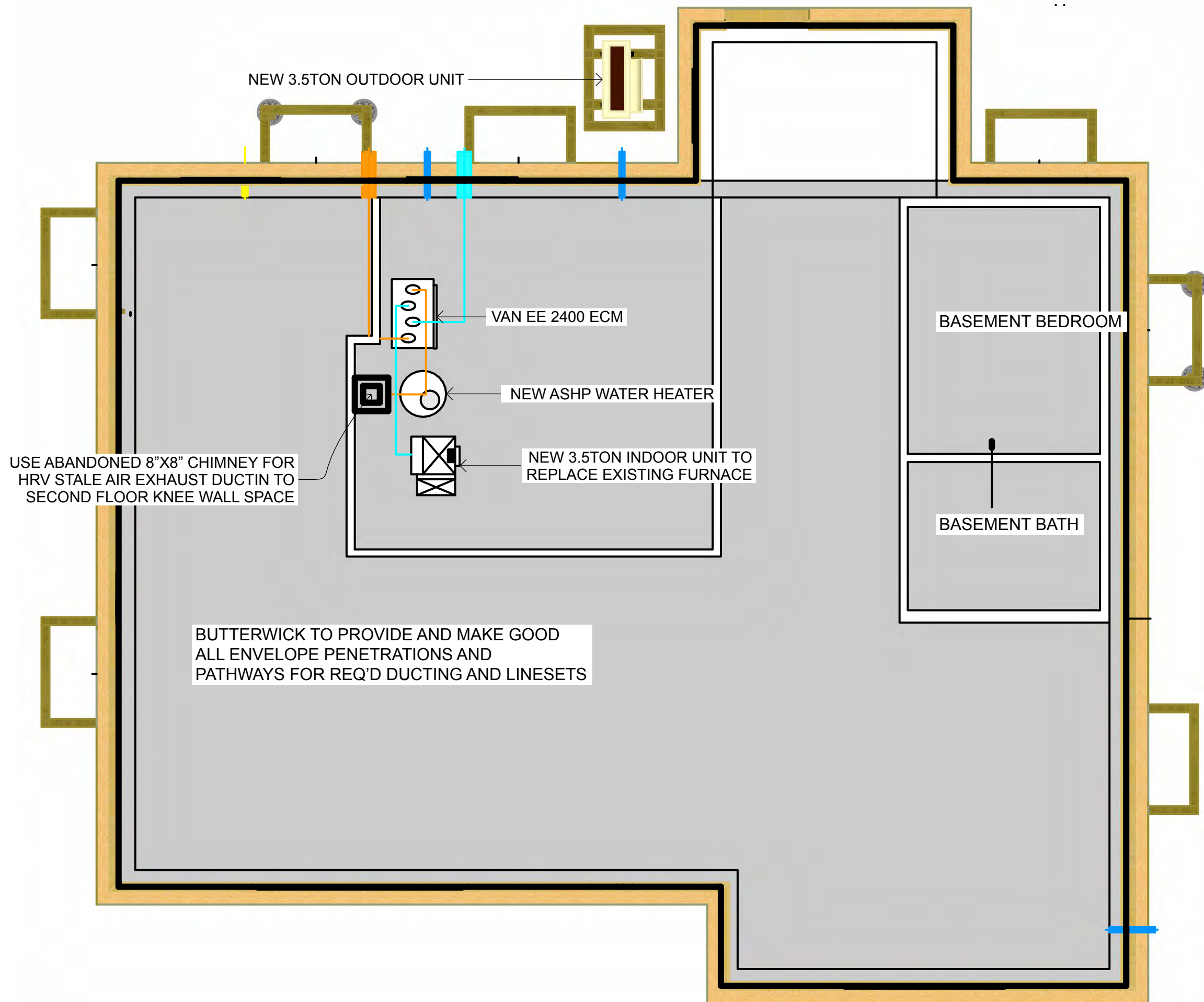
HIGHLANDS SITE DRAWINGS

DATE
May 24, 2022

FOR REVIEW

DRAWN BY
PA, TA

SECTIONS



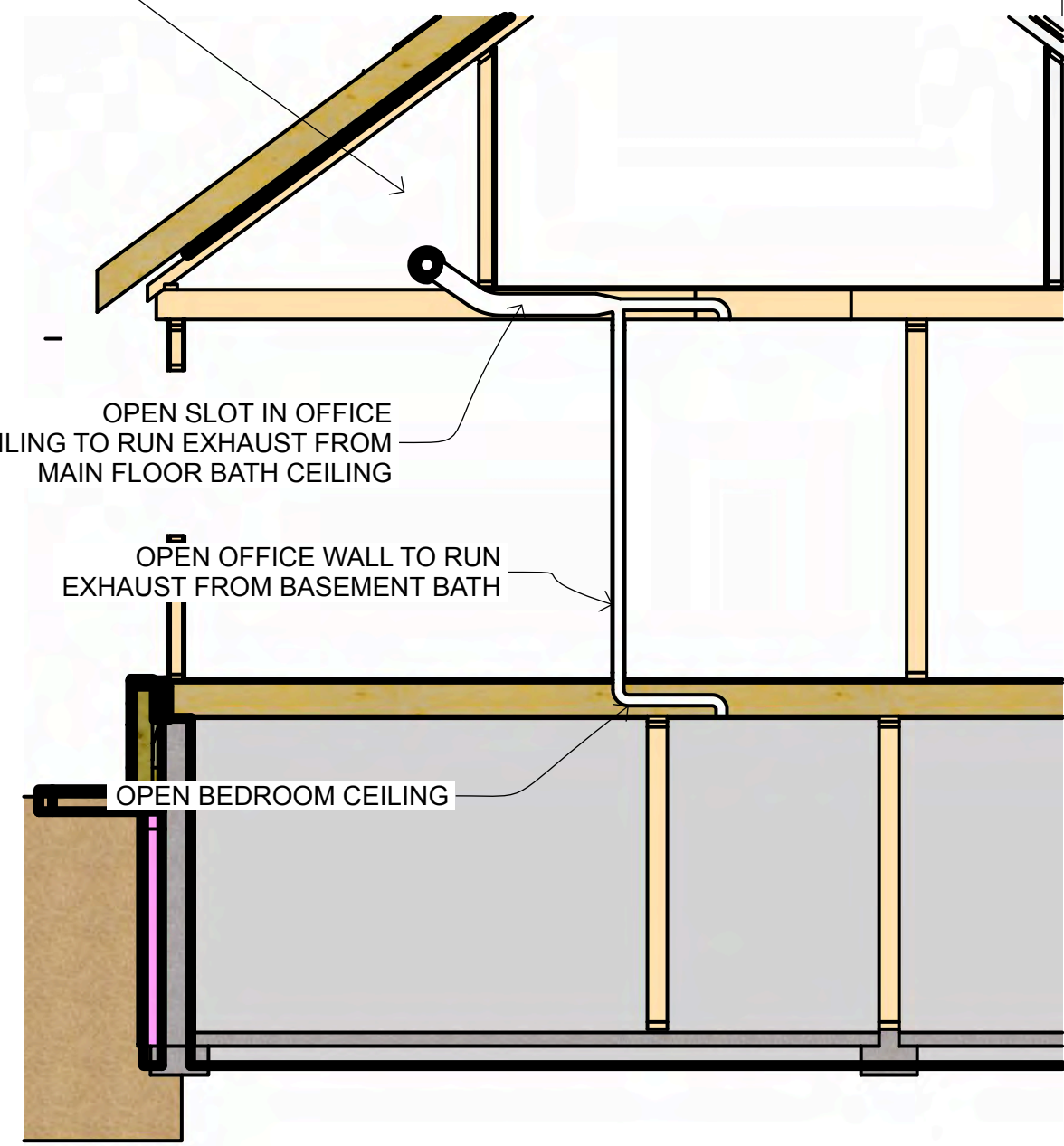
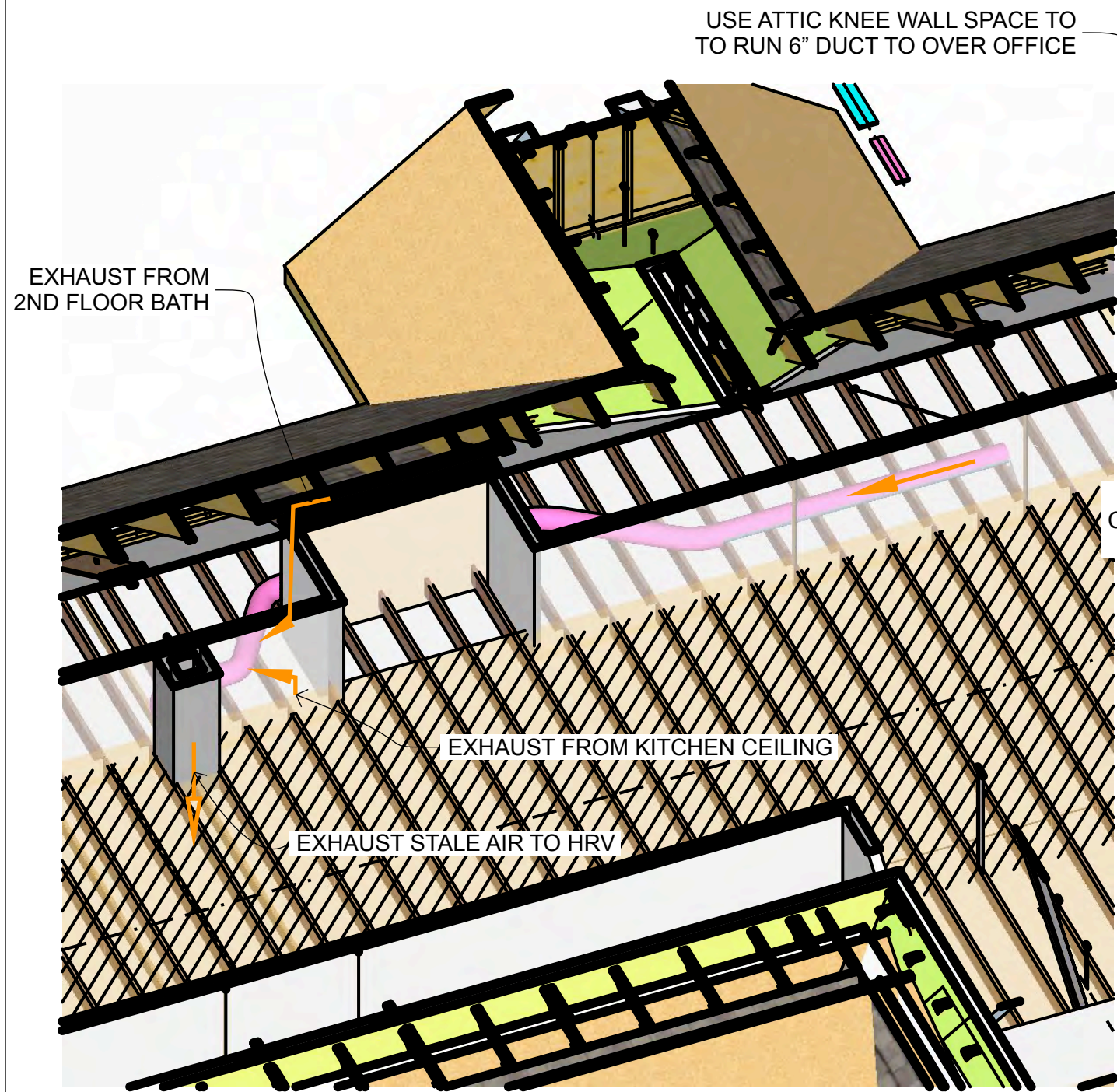
**HIGHLANDS SITE
DRAWINGS**

DATE
May 24, 2022

FOR REVIEW

DRAWN BY
PA, TA

**BASEMENT
MECHANICAL**



HIGHLANDS SITE DRAWINGS

DATE
May 24, 2022

FOR REVIEW

DRAWN BY
PA, TA

HRV DUCTING